



学ぼう!
日本語
Let's learn Japanese.



Tahara Global College of Welfare Japanese Language Department

School Information for International Student



田原福祉グローバル専門学校 日本語学科
Tahara Global College of Welfare /Japanese Language Department

01 School Introduction



School Building

**Whether be in Japan or in your country,
you can be a Certified Care Worker!**



School Library



School Cafeteria



Care Worker training room



Girls` Dormitory



Classroom



Tsubaki Hall

Tahara Welfare Global College is located on the Atsumi Peninsula in Aichi Prefecture and is surrounded by the sea and mountains. There is a mountain called Mt. Zao near the school, and you can see the sea and mountains from the observatory on the top of the mountain. (Mt. Fuji may be visible on sunny days!)

The school building has a stylish white exterior and has a clock tower as its trademark. The school is fully equipped with Wi-Fi, and has a school cafeteria which can be used for a low price. There is also a women's dormitory near the school that you can walk to.

The school building has a stylish white exterior and has a clock tower as its trademark. The school is fully equipped with Wi-Fi, and has a school cafeteria which can be used for a low price. There is also a women's dormitory near the school that you can walk to.

02 School Principal's Greetings

Ishikawa Yuuko, School Principal



We sincerely welcome anyone who wants to know Japan, learn about Japanese welfare and caregiving, and wants to work in Japan.

Our school trains careworkers who ambitions to be a certified care worker regardless of nationality. We strive to develop long-term care workers with specialized knowledge and skills. As we know, the world is becoming more globalized. Since 2021, we added "Global" to the school name and will open a Japanese language department to develop human resources for nursing care and welfare. We will help the international students with the

Japanese language needed for learning technical terms and the ability to communicate fluently, and provide a workplace for further success. We encourage you to enroll in our school where you can study with peace of mind and detailed guidance in a good environment. We sincerely welcome anyone who wants to know Japan, learn about Japanese welfare and long-term care, and wants to work in Japan.

03 What is Kaigo?

Caregiving is a job that supports “people's daily lives”.
 And Certified care workers play an important role
 in actualization of providing care.

Long-term care is about taking good care of the other person while leaning towards their needs. It's about helping people do what they can't do to able to continue living their personal lives. Japan is one of the countries in the world where the number of people in need of long-term care is increasing due to the aging population. And due to this, Certified care workers are required to have professional skills and knowledge. Hereafter, the work of certified care workers will play an important role not only in Japan but all over the world. Would you like to work as a long-term care worker to support the increasing number of elderly and disabled people? I'm sure you can see your own growth there.

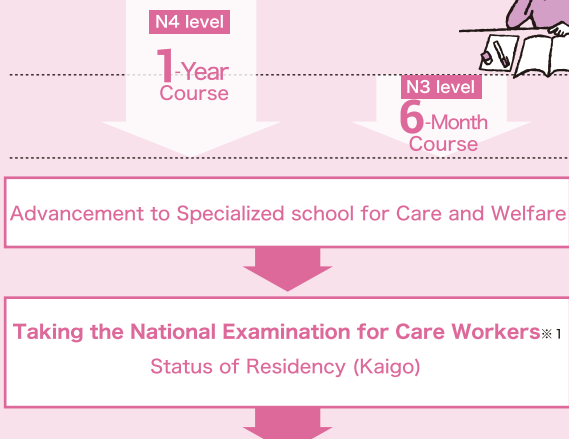


Learning flow

Tahara Welfare Global College Japanese Language Department

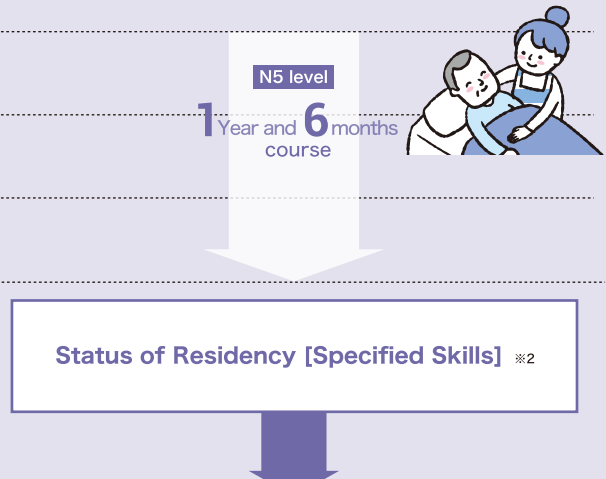
School Progression

Enter the Specialized School for Care and Welfare and aim to pass the National Examination for Care and Welfare Workers.



Employment

Acquiring of Status of Residency [Specified Skills] (Kaigo), and be employed to a care working facility



Employment in facilities for the elderly, facilities for the disabled, etc.

※1 What is the National Examination for Care Workers?

Japan's national qualification, "certified care worker," is a qualification of a specialist with the world's most advanced Japanese-style nursing knowledge and skills. It is expected to play an active role in Asia, where the population is aging. The exam is held every January.

※2 What is Specified Skills Visa?

It is a visa for a person who has a certain skill and knowledge and works as an immediate force, which was newly established in April 2019. Specified Skill No. 1 is allowed to work for 5 years, and you can get a visa by passing the Japanese Language Examination and the Care Worker Examination.

04 Introduction of Japanese language department

Aiming to advance to a school or employment

The Japanese language department is a course (1 year course, 6 months course) that aims to acquire a certified care worker with a national qualification by going to the Department of care and welfare, learning technical Japanese and skills of care and welfare. After graduating, there are two main courses (1 year and 6 months course) that aim to work as an immediate force with the qualification of Specified Skills.



Timetable (example)

Aim! For Higher Education

Aiming for College of Care and Welfare

- 1-Year course
- 6-Month course

In the 1-year course and 6-month course, with the keyword "collaboration," you will develop the ability to convey your thoughts and listen to and talk with each other through extensive reading and project work. There are also classes for preparing for the Japanese Language Proficiency Test N2, which is necessary for advancing to higher education, and classes for learning long-term care terms as a bridge to the Department of Care and Welfare.



Aim! Employment

Learn Japanese and skills of long-term care, and after graduation, aim to work as an immediate force with a qualification of a specific skill

- 1 Year and 6months course

In the 1-year and 6-month course, in addition to Japanese lessons, many exercises on long-term care techniques will be conducted using the facilities in the school. After graduation, you will be equipped with caregiving skills and knowledge needed for you to be able to work immediately. In addition, you will acquire the Japanese level of the Japanese Language Proficiency Test N3, which is necessary for smooth communication with facility users and Staff.



■ 1 year course / 6 months course (Intermediate Advanced level 1)

	Mon	Tue	Wed	Thurs	Fri
1st period (13:10 to 13:55)	Home room extensive reading	Grammar	Reading comprehension	Comprehensive learning	Project work Situational circumstances in Japan
2st period (14:00 to 14:45)					
3st period (14:55 to 15:40)	Composition	Character / vocabulary solution	Characters, Vocabulary, Reading comprehension	Characters, Vocabulary	
4st period (15:45 to 16:30)		Listening	January ~ Caregiving Japanese Terms	Listening	

■ 1 year and 6 months course (level 5)

	Mon	Tue	Wed	Thurs	Fri
1st period (9:00 to 9:45)	Home room employment measures	Characters, Vocabulary	Grammar	Characters, Vocabulary	Grammar
2st period (9:50 to 10:35)		Listening		Listening	
3st period (10:45 to 11:30)	Composition	Reading Comprehension	Japanese for Caregiving (Caregiving skills)	Japanese for Caregiving (Caregiving skills)	Japanese for Caregiving (Words and Situational circumstances in Japan)
4st period (11:35 to 12:20)					

05 Tuition fees

Aiming for Care and Welfare College		Aiming for employment
6 months course	1 year course	1 year 6 months course

Expense items	Aiming for Care and Welfare College		Aiming for employment
	6 months course	1 year course	1 year 6 months course
Entrance examination fee	20,000Yen		
Admission fee	50,000Yen		
Tuition fee	330,000Yen	600,000Yen	900,000Yen
Facility usage fee	60,000Yen	120,000Yen	180,000Yen
Material Fee	8,000Yen	16,000Yen	24,000Yen
Extracurricular activity costs	8,000Yen		
Health care costs	3,500Yen		
Total	479,500Yen	817,500Yen	1,185,500Yen

- ※All prices include tax.
- ※Transportation expenses for commuting to school and practical training depends on the actual expenses.
- ※Expenses for teaching materials and extracurricular activities may vary.
- ※Costs of the Japanese Language Proficiency Test (JLPT) and various qualification tests depend on the actual expenses.
- ※Expenses for separate accident, injury insurance is required.

06 Curriculum

	April	July	October	January	March
CEFR	A2	B1.1		B1.2	B2
JLPT	N3			N2	
Class	Intermediate 1	Intermediate 2	Intermediate Advanced 1	Intermediate Advanced 2	
Content of Study	Japanese Capability: Intermediate Extensive reading / activities	Japanese Capability: Intermediate Extensive reading / activities	Preparing for school advancement Japanese Language Proficiency Test N2 Measures	Caregiving skills and Japanese	Japanese for Caregiving
			Extensive Reading / Project Work	Extensive Reading / Project Work	

	10月	1月	4月	7月	10月	1月	3月
CEFR	A1	A2.1	A2.2		B1		
JLPT	N5		N4			N3	
クラス	レベル1	レベル2	レベル3	レベル4	レベル5	レベル6	
学習内容	Introduction to Japanese Japanese affairs	Japanese beginner 1 Japanese affairs	Japanese beginner 2 Japanese affairs	Preparing for employment: Japanese for Caregiving Japanese Language Proficiency Test N3 Measures	Caregiving skills and Japanese Japanese Language Proficiency Test N3 Measures	Caregiving skills and Japanese Japanese Language Proficiency Test N3 Measures	

07 Voice of Seniors

Caregiving is a rewarding job for both foreigners and Japanese.



Employed Seniors



NGUYEN THI LE NA

Vietnam

I studied N2 level Japanese at a Japanese language school and enrolled in the College of Care and Welfare. At school, there were many difficult technical terms, but because I was studying at a Japanese language school, it helped my studying in college. After passing the national examination for certified care workers, I am currently working as a full-time employee in a special nursing home for the elderly. Caregiving is difficult, but it is very rewarding regardless of whether you are a foreigner or a Japanese.

新しい言語を学ぶことは、大変ですが面白い!
日本の文化や介護の言葉も学びに役立ちます。

Seniors still learning



SATINGASIN ELAH JANE CANUBAS

Philippines

When I started studying Japanese at a Japanese language school, because I had difficulty with hiragana, katakana, and kanji at first, I was struggling to communicate. Studying Japanese was harder than I expected. But learning a new language is hard yet interesting. At the Japanese language school, I was able to learn Japanese culture and the language for caregiving, which is very useful for my school life at the care and welfare college. Now, I can interact with teachers and classmates and convey my thoughts in class.



There are events to interact with local people, and there is also a place to learn about traditional Japanese culture.



The school's biggest event "Tappuku Festival"



Experience to learn traditional Japanese culture



Interact with the community (Bon Odori, etc.)



Graduation ceremony

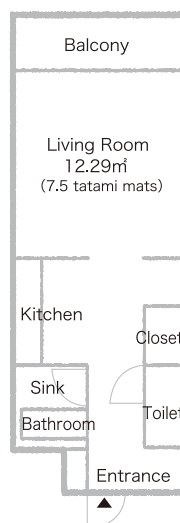


Reasonable priced student dormitories (20,000 yen per month) are safe and are used by many female students



Equipped with security camera and facilities.
Safe and secure studio apartment type.

※If the capacity is full, you may not be able to move in.



20,000 yen per month Capacity 40 people 4 stories

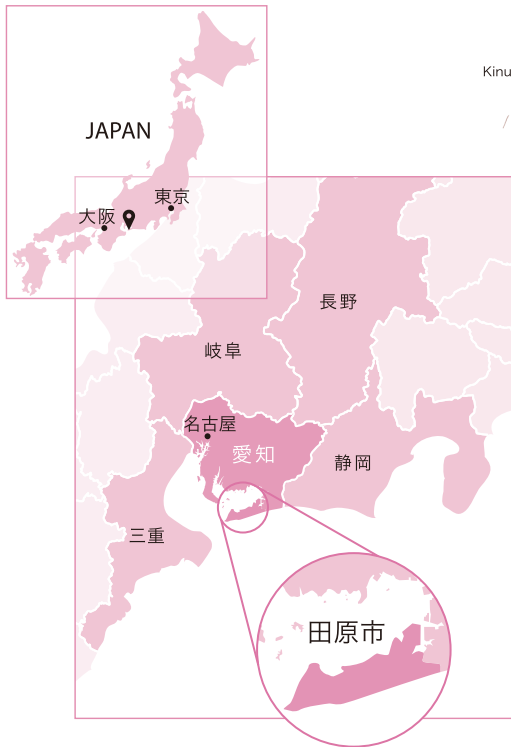
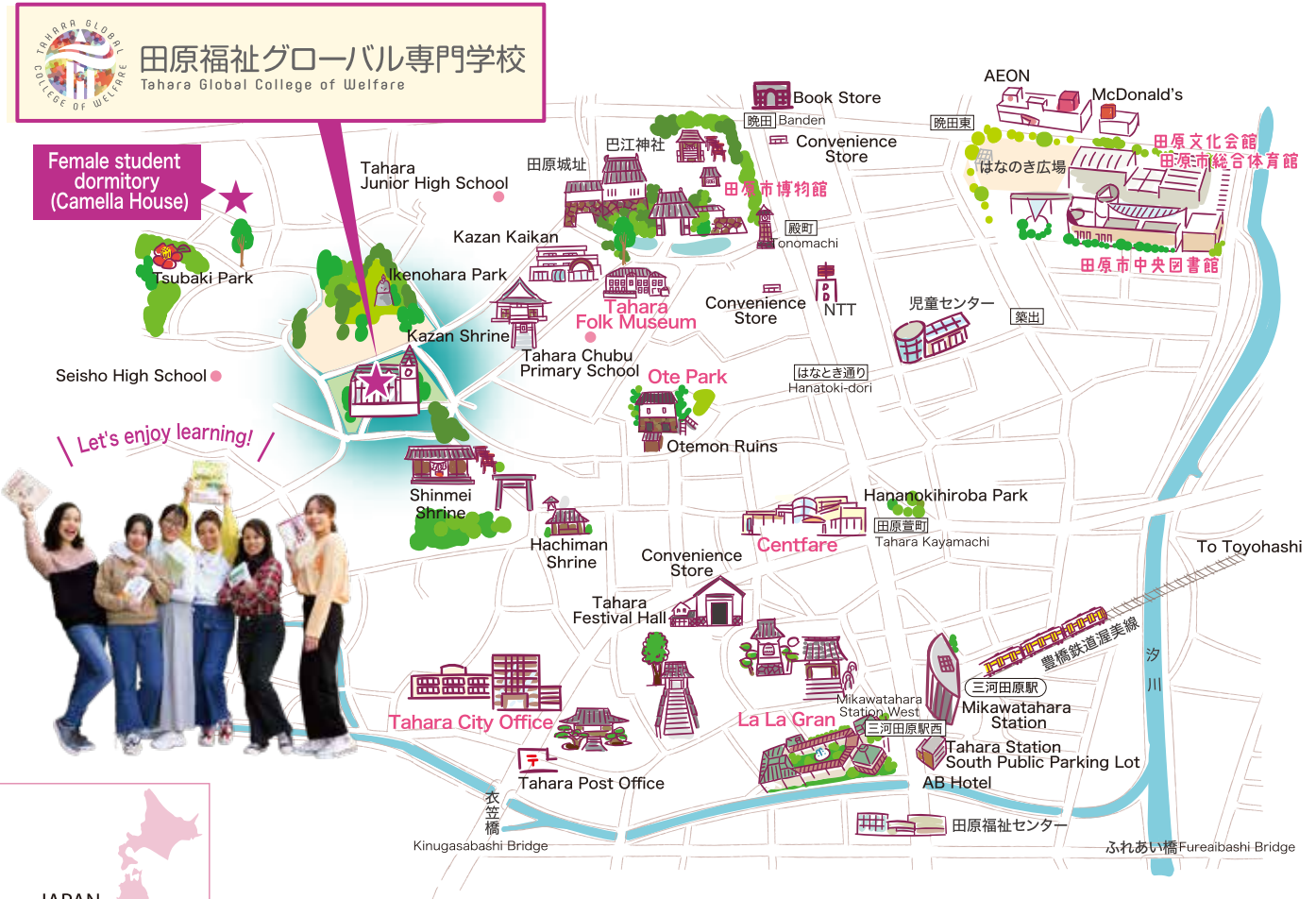
- Water, electricity, Wi-Fi fees, etc. are actual expenses
- Dormitory self-government membership fee 2,000 yen per month
- Room facilities: bath, toilet, kitchen, air conditioner, closet, bed, telephone, lighting
- Shared facilities, Lounge, bicycle parking lot, washing machine / dryer
- Furniture / home appliance rental service (extra charge)
- Supper lunch service (extra charge)



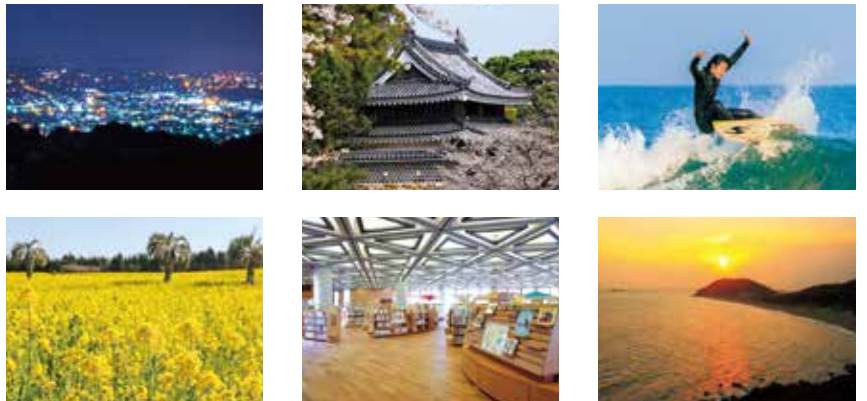
Dormitory lounge

Ensured Privacy

There is a nearby station as well as a park.



Location of the school · Scenery of Tahara City, Aichi Prefecture



Aichi Prefecture is located in the center of Japan and is conveniently located for easy access to Tokyo and Osaka. In addition, there are major cities such as Nagoya and Toyota, which have the largest population in Japan and are home to many foreigners. Tahara City is located in a warm climate and easy to live in, and is a region where flowers and vegetables are abundant.



田原福祉グローバル専門学校 日本語学科

Tahara Global College of Welfare / Japanese Language Department

〒441-3421 愛知県田原市田原町中小路11番地1

<https://www.tgcw.jp>

TEL.0531-22-3939 ✉ jpn@tgcw.jp

福寿園グループ



ホームページ



Facebook



Instagram